

Product Catalog

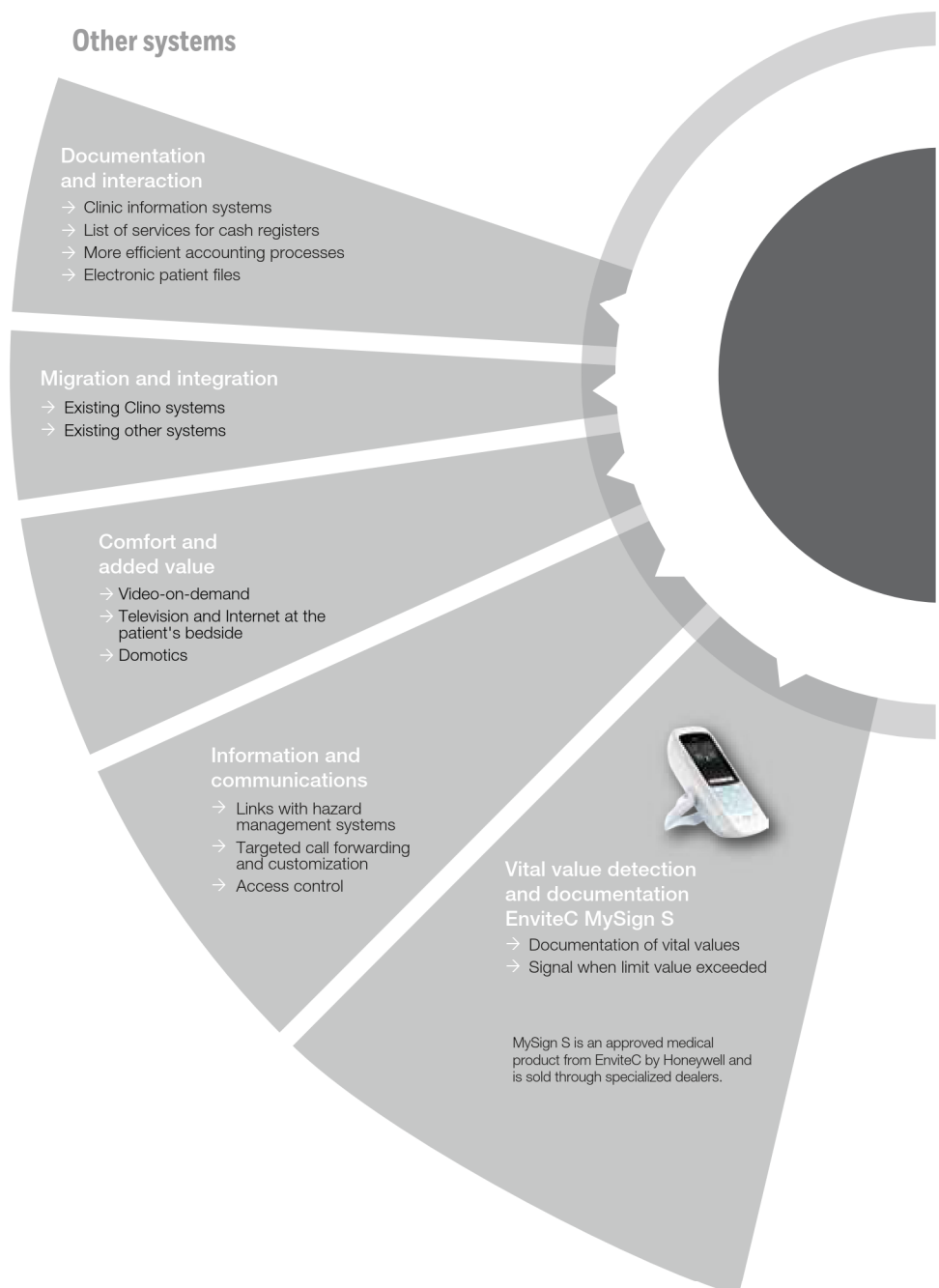
# **SYSTEVO CALL ACKERMANN**



# One system, many options

Systevo is the platform for innovative systems in the area of communication and documentation in care facilities. With its broad range of high-quality products, Intelligent Life Care offers tailor-made solutions.

The focus is on the consistent use of open standards that guarantee the convergence of systems and the improvement of processes.



**Fast support  
Mobile call units**

- Safe nurse call system
- Simple handling
- Easy to clean



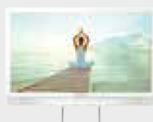
**Communication  
and comfort  
Systevo Com**

- Safe nurse call system
- Discreet voice/telephony
- Domotic functions
- IP networking
- Illuminated display
- Intelligent sensors
- Hygienic surfaces
- Long-lasting and robust



**Infotainment  
Systevo Media**

- Domotic functions
- Video-on-demand
- TV and radio
- Kiosk functions
- Patient files at the bedside



**Care data management  
Systevo Touch IP**

- Documentation in the room
- Call up and patient data
- Presence detection via RFID
- Dutyroom and Masterstation functionality



**People and  
device tracking  
Systevo Guard**

- RFID Transponder
- Access control to secure areas
- Infant protection (abduction alarm)
- Locating of devices



**Information and  
communications  
Systevo Mobile**

- Fast, targeted information
- Robust device design
- High level of protection of investment
- Presence detection via RFID

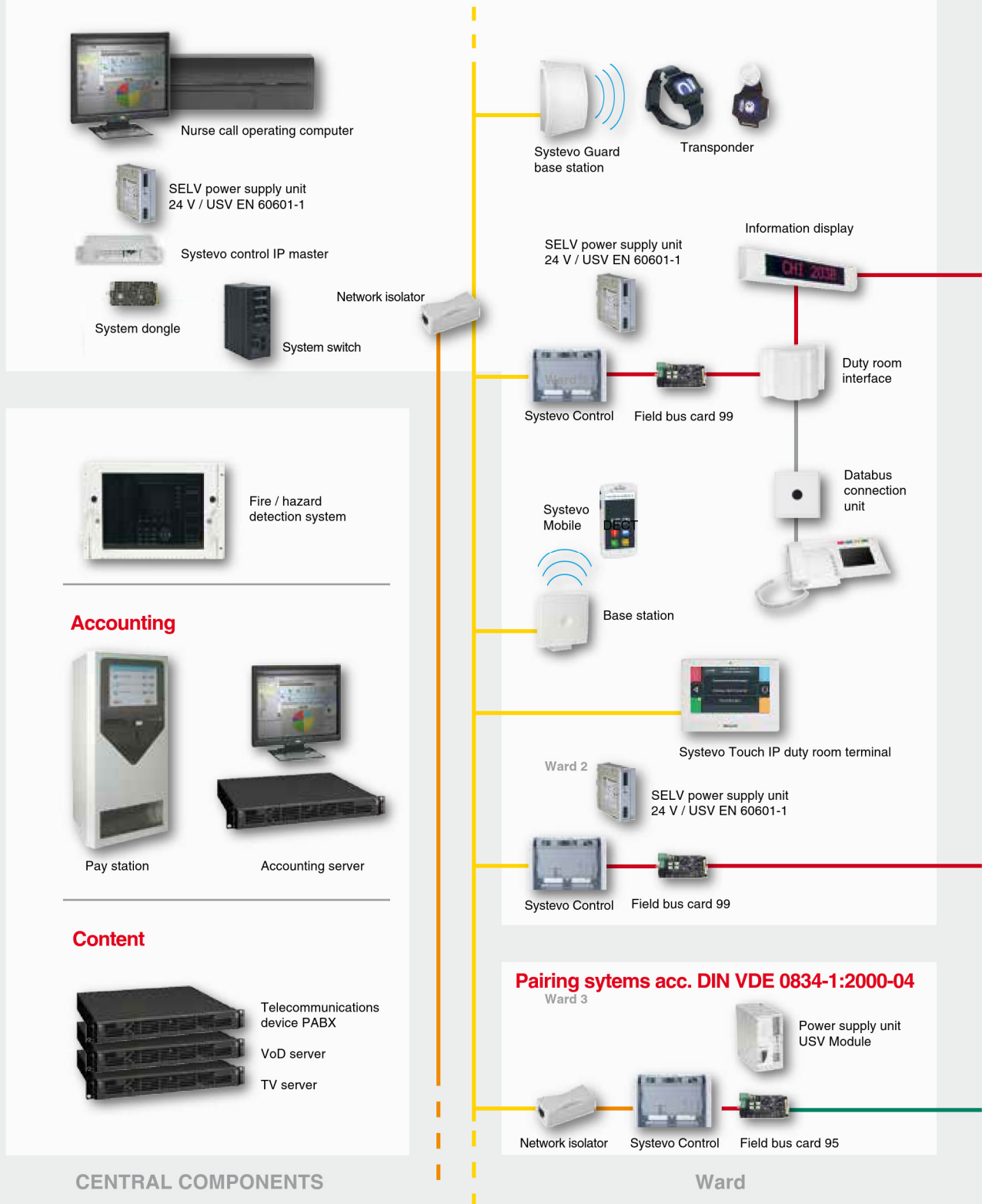


**Integration  
and migration  
Systevo Control**

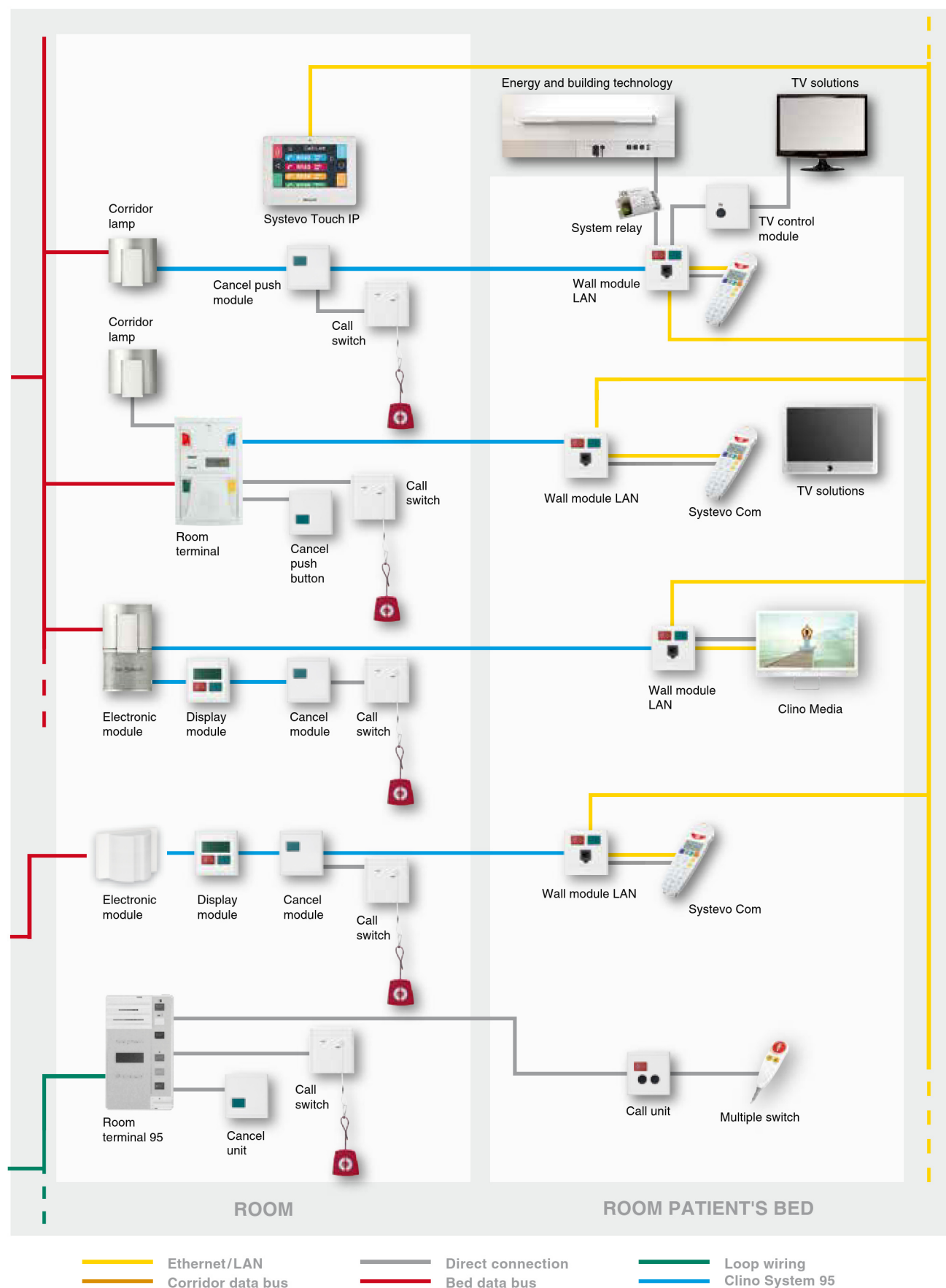
- Modular structure
- Future-proof concept
- Intelligent alarm management
- Simple integration



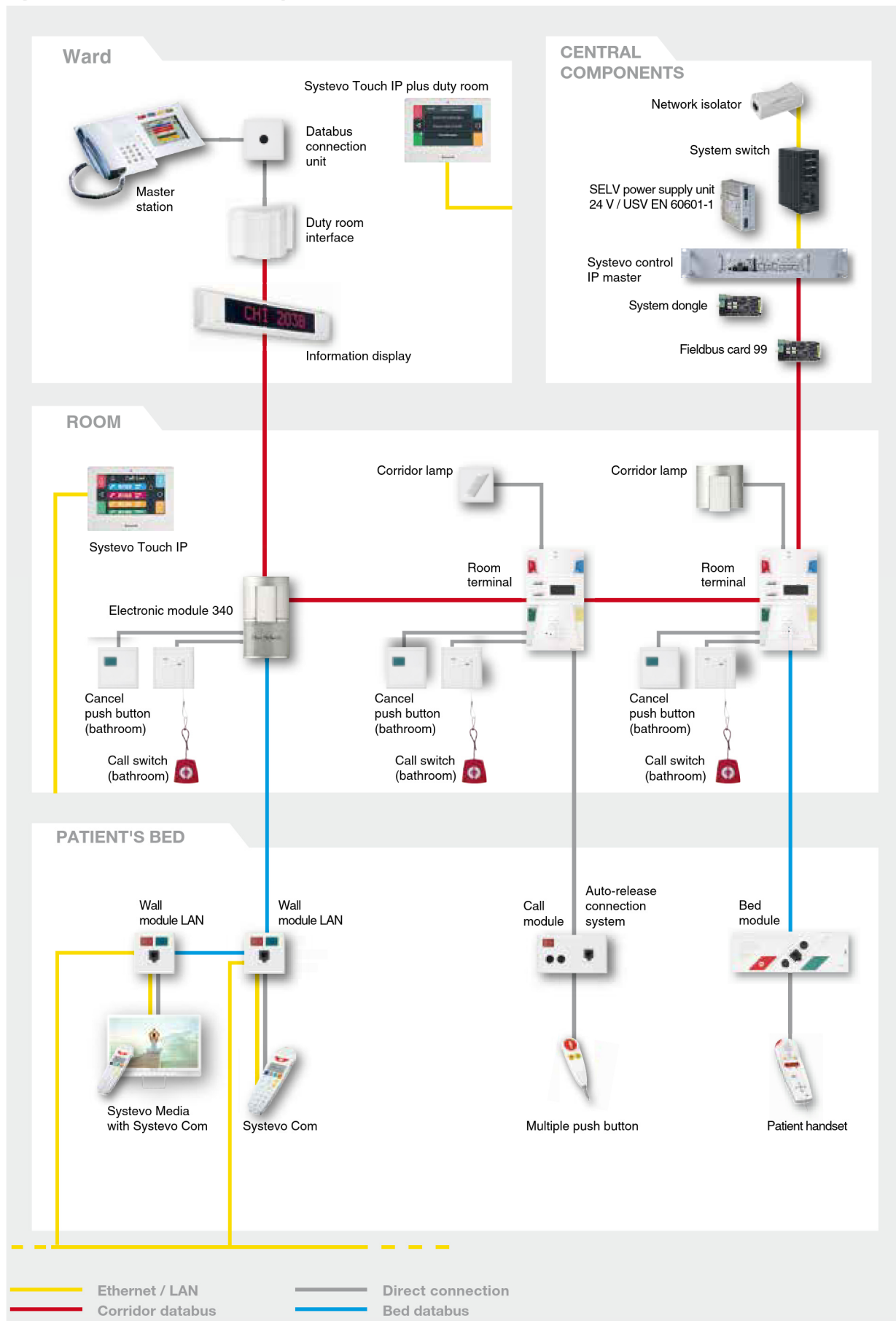
## Central components and Networking according to DIN VDE 0834



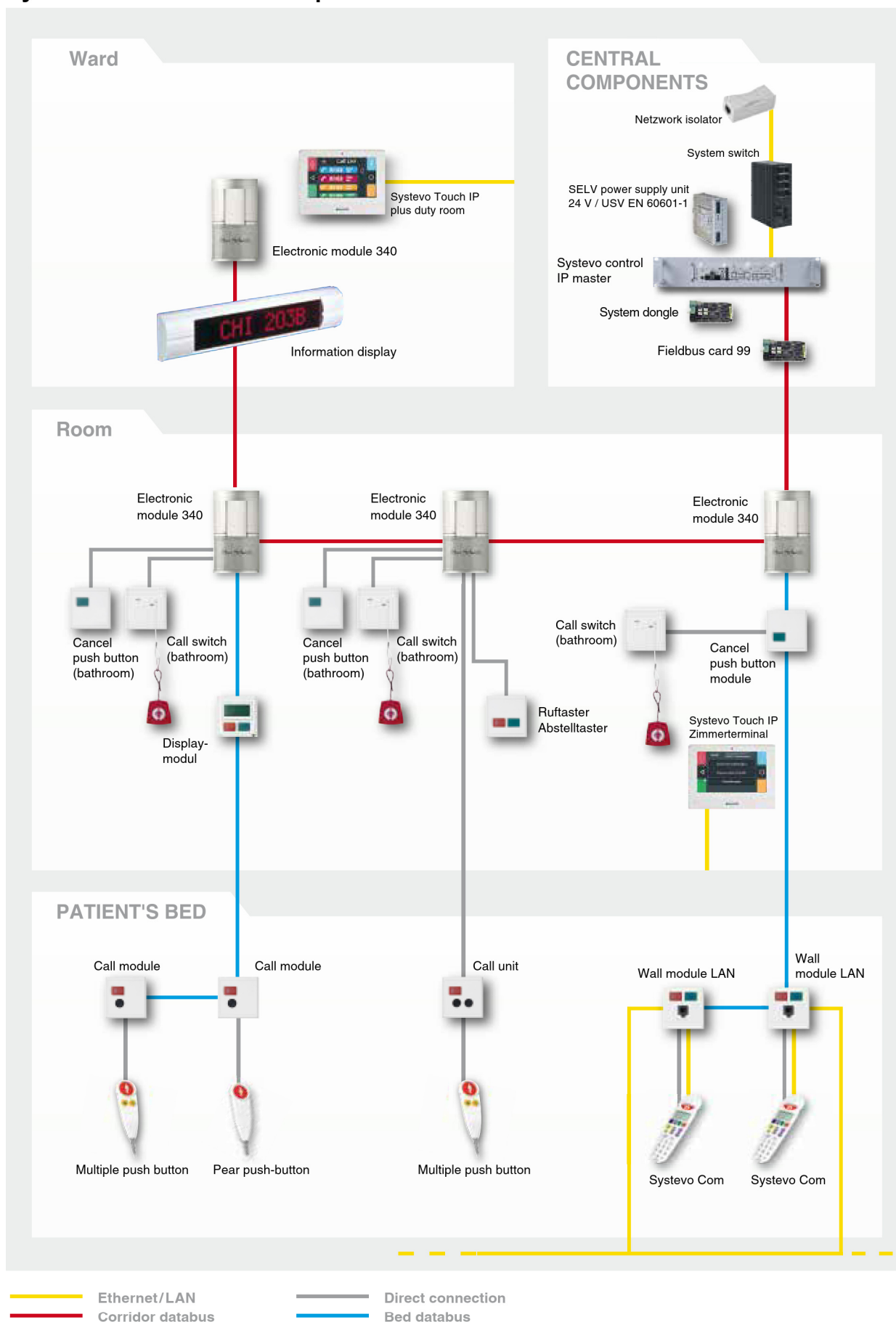




## System Overview with Speech



## System Overview without Speech



## Patient Admission and Billing



Comfortable administration and management software for adaptation of individual service and accounting concepts.



Pay station for labor-saving administration and accounting of value-added services.



RFID patient/staff cards for the secure use of control and accounting functions.

## Ward Corridor



Information display for prioritized and duty-dependent plain text display of calls and alarm messages from activated systems. Also available as the Clino Dashboard solution for displaying values for vital signs in conjunction with medical monitoring systems.



Corridor lamp using LED technology for energy-saving and maintenance-free call and presence display.



Electronic module with integral corridor lamp as freely configurable control unit for rooms without intercom functionality.



Touch terminal as a display, control and communication unit with optional PIN code protected authentication especially for critical applications such as shift /duty selection, call forwarding, escalation routines and priority settings.



## Resident Room



Display module for programmable and duty-dependent call and presence display with integral buttons for call initiation and presence verification.



Call unit with auxiliary plug-in contacts for connecting mobile call units, pear push-buttons, etc. and socket for connecting medical devices (infusion pump, monitor, etc.) with dedicated call initiation.



Pull cord for spray water protected call initiation and call/cancel button for acknowledging calls from the wet room.



IP-Touch terminal as a display, control and communication unit, high resistance to daily stress (operation, cleaning, disinfection, jolts etc.). Suitable for use in care facilities with high standards of hygiene, stability, longevity and durability. Temporary switch-off of the touch display for cleaning mode to disinfect the surface / the housing.

## Patient Room with Discreet Speech



In addition to the standard nurse call functions, the room terminal is a communication, display and control unit for the nursing staff that also supports several programmable call and presence circuits and digital intercom functions, such as auxiliary queries and staff communication.



Bed module as multifunctional interface to simple and integrated patient handsets allows simple control of ELA, patient TV and room control functions (light, blind, etc.) and discreet communication for care purposes.



Pull cord for spray water protected call initiation and call/cancel button for acknowledging calls from the wet room.



Professional patient TV and multimedia devices – wall or bedside options. The TV control module facilitates control and permits audio transmission through the patient handsets of the nurse call system.

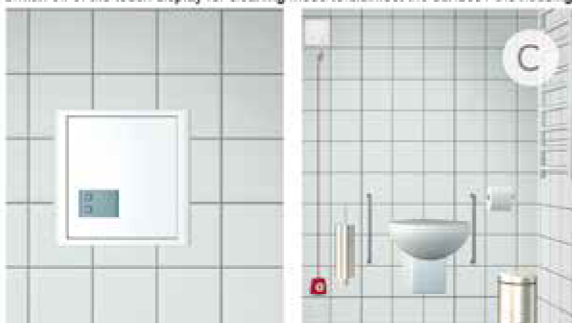
## Patient Room with TV/Telephone



IP-Touch terminal as a display, control and communication unit, high resistance to daily stress (operation, cleaning, disinfection, jolts etc.). Suitable for use in care facilities with high standards of hygiene, stability, longevity and durability. Temporary switch-off of the touch display for cleaning mode to disinfect the surface / the housing.



Wall module LAN and integrated patient handset with control, telephone and accounting functions, and optional call processing via mobile DECT terminal devices.



Pull cord for spray water protected call initiation and call/cancel unit for acknowledging calls from the wet room.



Professional patient TV and multimedia devices available as wall or bedside options. The TV control module facilitates simple control and enables audio transmission to the patient handsets of the nurse call system.



## Patient Room with Multimedia



The patient handset Systevo Com offers through the combination of a call device and the IP data network a comfortable management solution at the patient's bedside. Different functions are available such as TV and room control, patient telephony with accounting and mobile and stationary call inquiries. Due to the innovative design, the handset is intuitive to operate and can be cleaned easily due to its IP 54 protection class housing. The self-release connection system protects the installation from damages and the replaceable connection cables and housing elements guarantee the protection of the investment



The Wallmodul LAN offers a individual solution at the Patients Bedside. With its self-release connection system WM Lan offers an entire installation protecting interface for SIP based Patient-communication and telephony, domotic and multimedia control and last not least a reliable nurse call functionality.

## Offices with Systevo Touch IP plus



Informationsterminal in IP Technologie zur Anzeige und PIN geschützten Steuerung von Diensten und Zusammenschaltungen. Auch mit SIP basierter Sprachoption.



## Office with concentrated station query



Master station as a convenient and versatile display, communication and control unit for the ward office or duty room with touch display for duty room functions such as patient call prioritization, duty selection, discreet communication in digital quality (staff communication, call queries, announcements), etc.



Wall unit for presence control (parallel to master station).

## Ward Bathroom



In addition to the standard nurse call functions, the room terminal is a communication, display and control unit that also supports several programmable call and presence circuits as well as digital intercom functions that are adapted to the acoustics of the room in question, etc.



Pneumatic call unit for reliable call initiation in the bath area using a built-in, spray water protected unit and a potential-free, easy-to-clean rubber ball.

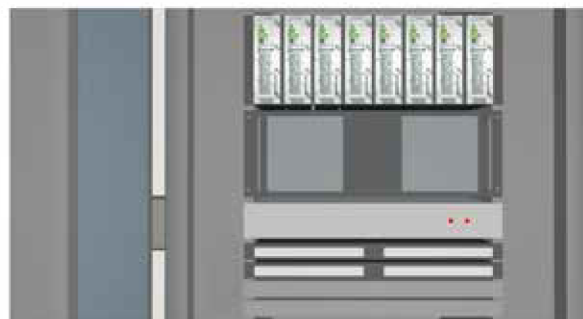


Pull cord as call unit for reliable call initiation in wet room areas. The spray water protected unit is installed above the water outlet / shower head and can be fitted to provide spray water protection to IPx4 using the optional sealing kit. The red, 2 m long, PVC pull cord with knob and call symbol means that calls can be initiated reliably even by a person who is lying on the ground.

## Migration and system upgrade by IT and telecommunication value-added services



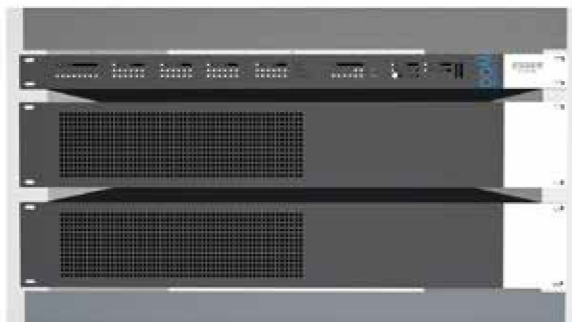
System expansion with IT and telecommunication value-added services in 19" cabinet consisting of servers, system switches for using existing 2-wire installations.t



The central call equipment installation in the 19" cabinet consists of an operating computer, system switch, USV and a control panel Systevo Control.

In the rack, up to 7 units can be used to replace an existing patient call centre.

## System extension with building management solution



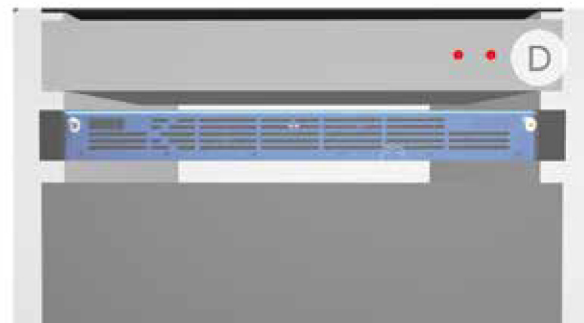
Event-dependent announcements and alarm and evacuation control e.g. with Esser Variodyn D1.



Safe and targeted information for the care staff in case of fire events e.g. with FlexEs fire alarm systems from Esser.



Systevo DECT System for the safe transmission and escalation of calls and alarm messages via SMS technology to mobile terminal devices especially optimized for use in care equipment.



Nurse call server for system configuration and interface for protocolling and connection of external systems, like e.g. Systevo Guard Protection System for Disoriented Persons and Babies.